



MORECA

*MOnitoring of large scale small holder
REforestation projects for CARbon finance
mechanisms*

Mone Van Geit (WWF), Alix Sotiaux (ULB),
Eléonore Wolff (ULB) & Pierre Defourny (UCL)



Eco Makala programme

- Started in 2007. Ongoing
- **Reforestation** of around **5000ha**
- **Surroundings of the ViNP (Eastern DRC)**
- **Small holder fields (0,5-5ha)**
- Executed by **WWF Goma** in collaboration with **local associations** and **farmer-planters**
- **Charcoal** provision to the **local population**



Forest Carbon projects

- Carbon finance mechanisms as A/R CDM and REDD > requirements > user needs:
 - **Eligibility** of the **lands**: a conclusive proof that the lands were not carrying forest between 1990 till present;
 - **Monitoring** of the **plantations** in terms of **carbon uptake estimates**.
- => Robust forest monitoring system and methodology are a necessity (and are the counter stones of carbon fin. mechanisms)**



Objectives

- **Elaboration and validation of a methodology** based on **optical and radar** technology in order to:
 - **define the eligibility of lands**
 - > forest definition (UNFCCC)
 - > ref. year 1990
 - **monitor** a huge number of dispersed **plantations**
 - > forest/non-forest
 - > carbon uptake estimates

in a cloudy mountainous tropical region

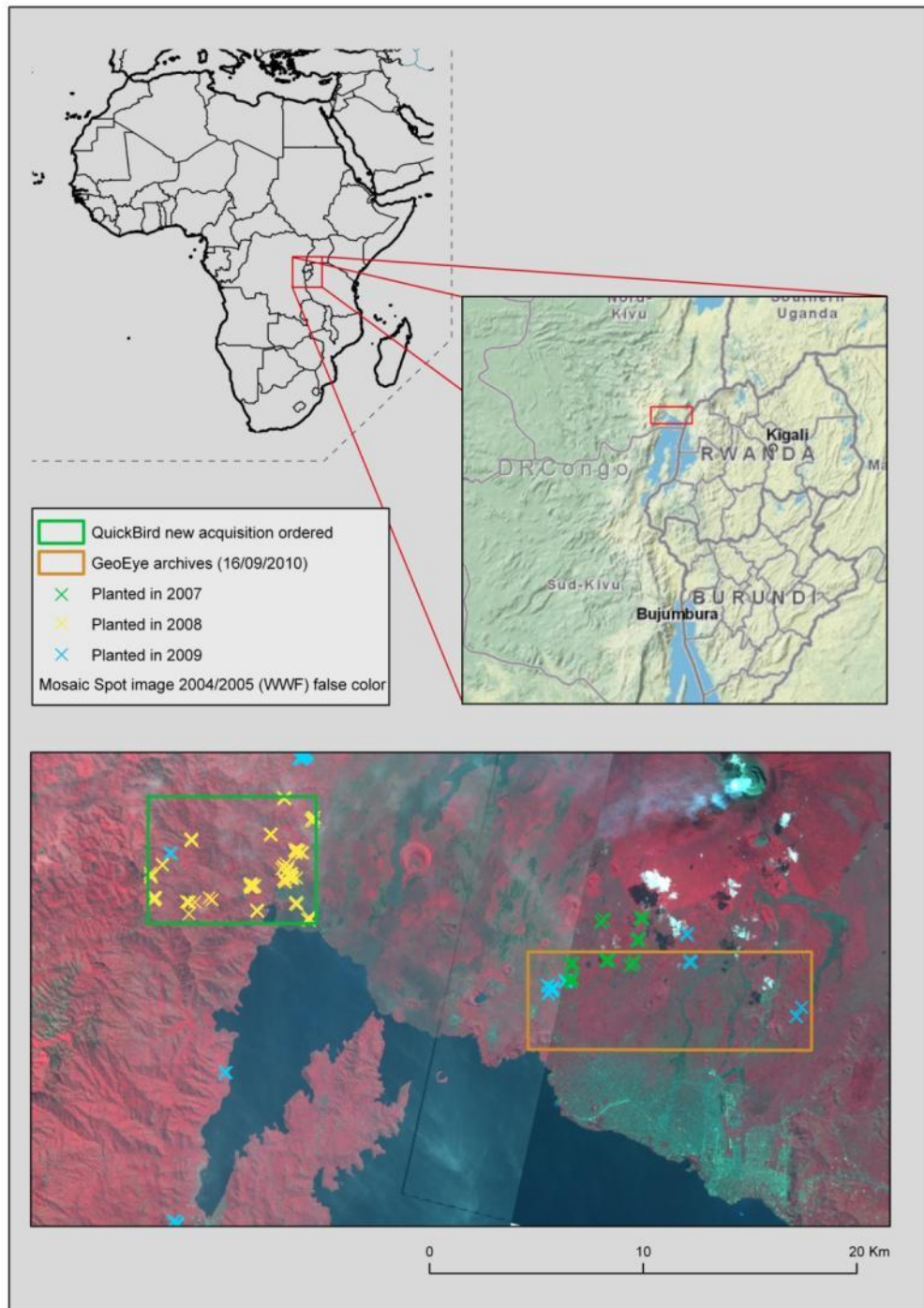


Scientific questions

- In the context of a **large scale reforestation project (> 1000ha) on dispersed small holder grounds (0.5-5ha) in a cloudy and mountainous tropical region:**
 - how to define whether a field parcel with a min. surface of 0.5ha is either a forest or not?
 - how to estimate the carbon stored in a field parcel with a min. surface of 0.5ha that meets the definition of a forest, based on extrapolation of field measurements?
- =>Project design and location makes the use of remote sensing particularly relevant**



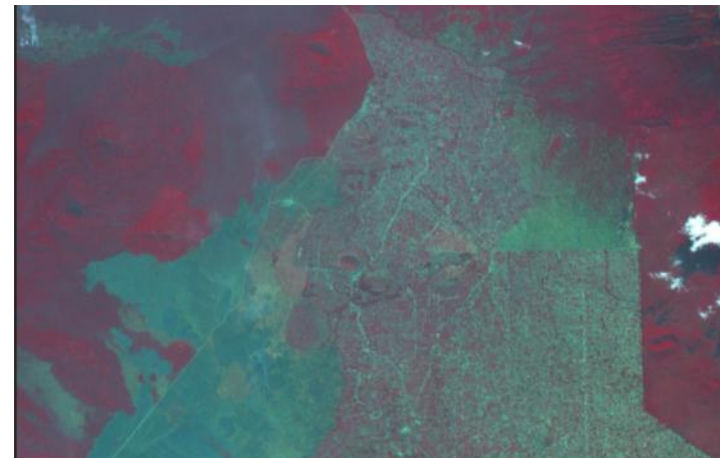
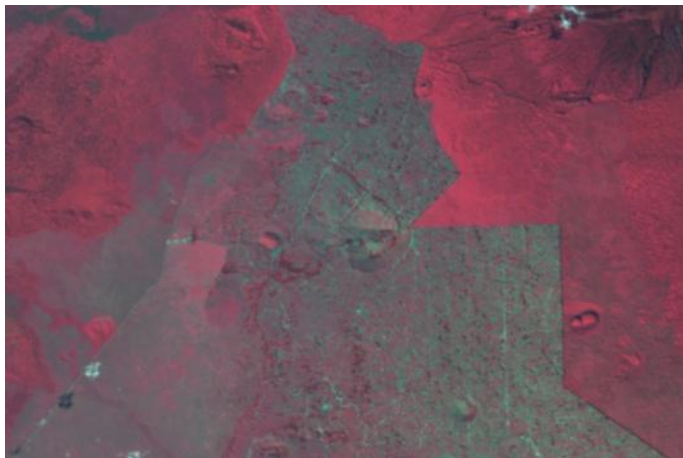
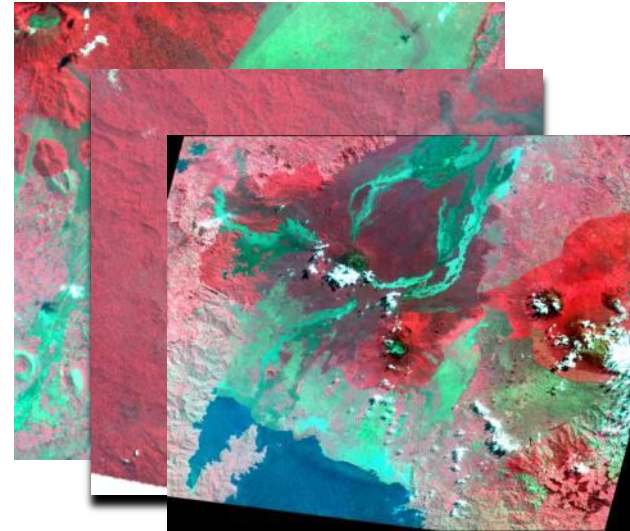
Where?



Eligibility map

HR (Spot) 1990/1995/2000/2010

- Pre-treatment
 - Multi-segmentation
 - Classification
- Eligibility map (not forested since 1990)



Change between 2004 and 2009 (Spot images Belspo)



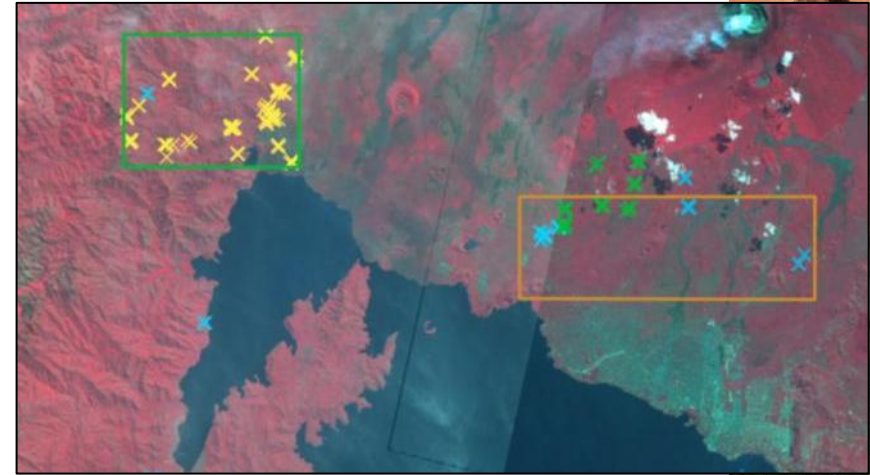
Monitoring of plantations

VHR (GeoEye 2010 XS)

Planted in 2009

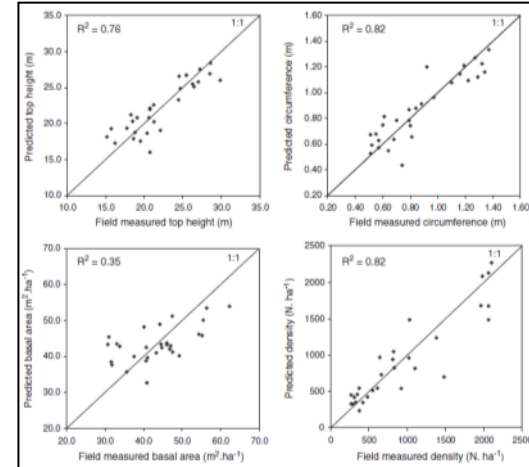
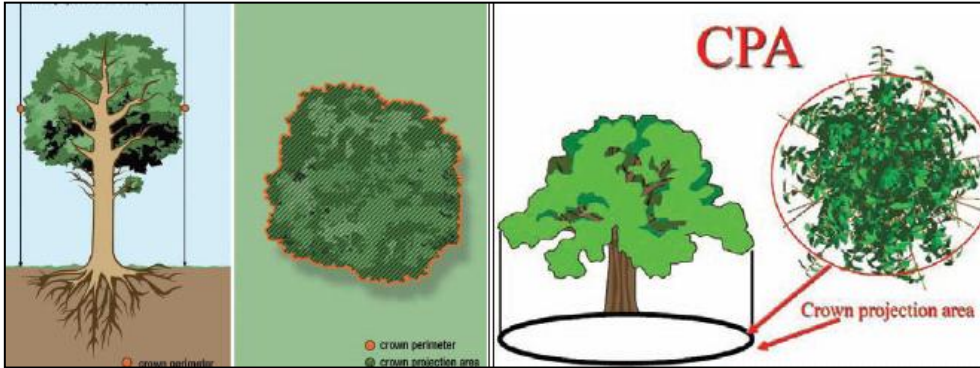


Planted in 2007



- QuickBird new acquisition ordered
 - GeoEye archives (16/09/2010)
 - Planted in 2007
 - Planted in 2008
 - Planted in 2009
- Mosaic Spot image 2004/2005 (WWF) false color

Biomass estimation



- Establish **empirical relationships** between derived **indices** and **estimates of carbon** by **multiple regressions** (Foody et al., 2003, Lu, 2005)

